
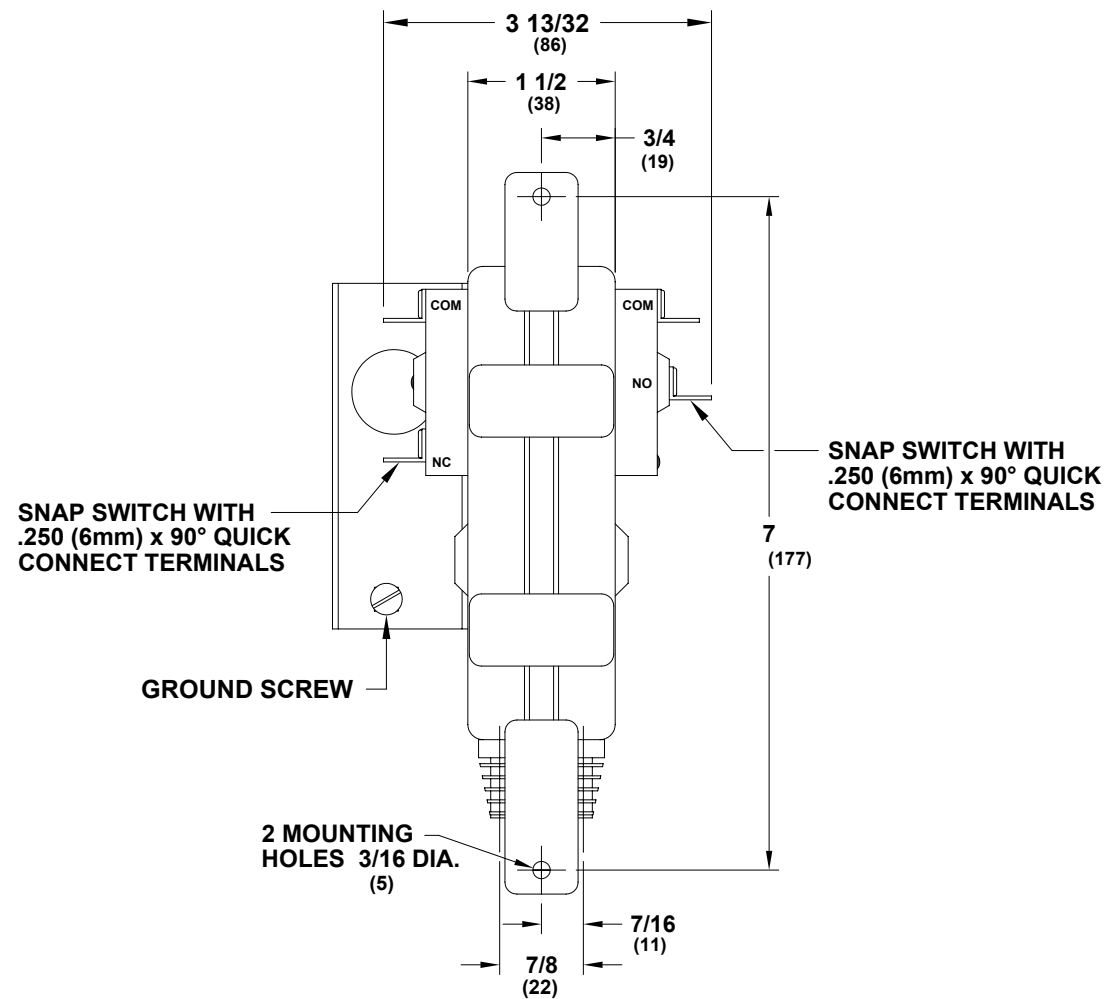
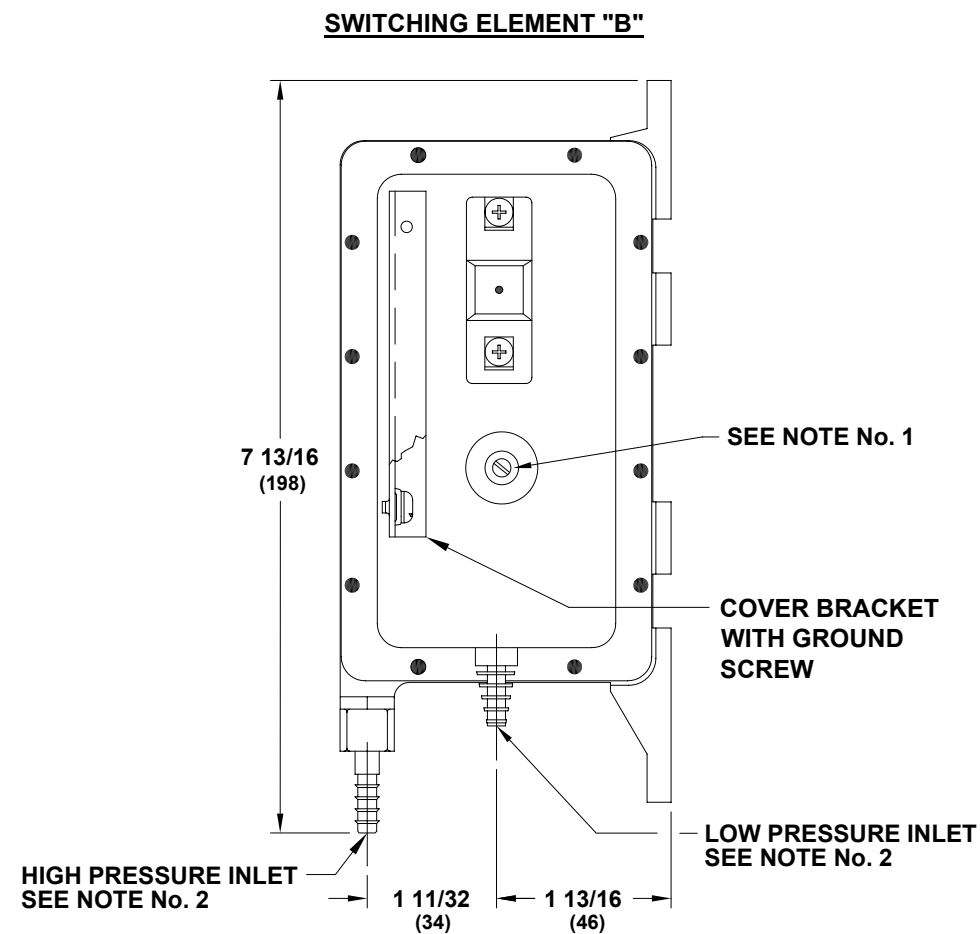


SPECIFICATIONS: SWITCHING ELEMENT "B"

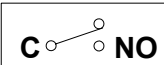
- 1.0 Mounting Position: Diaphragm Vertical (See Diagram Below).
- 2.0 Set Point (Sealed): Factory Set @ 1.35" w.c. Pressure Rise Vertical Plane.
- 2.1 Field Adjustable: "Operate Range" .07" w.c. to 2.0" w.c.
- 2.2 Field Adjustable: "Release Range" .04" w.c. to 1.9" w.c.
- 3.0 Approximate Switching Differential: Progressive; Increasing From .02 ± .01" w.c. at Minimum Set Point To Approximately .1" w.c. At Maximum Set Point.
- 4.0 Measured Media: Air
- 5.0 Operating Temperature Range: -40° to 176° F (-40.0° C to 80.0° C).
- 6.0 Life: 100,000 Cycles Minimum At ½ PSI Maximum Pressure Each Cycle And At Maximum Electrical Load.
- 7.0 Electrical Rating
- 7.1 300 Va Pilot Duty At 115 to 277 Vac
- 7.2 15a Non-inductive to 277 Vac
- 8.0 Contact Arrangement: SPST
- 9.0 Position Of Switch Contacts Before Pressure Is Applied: 

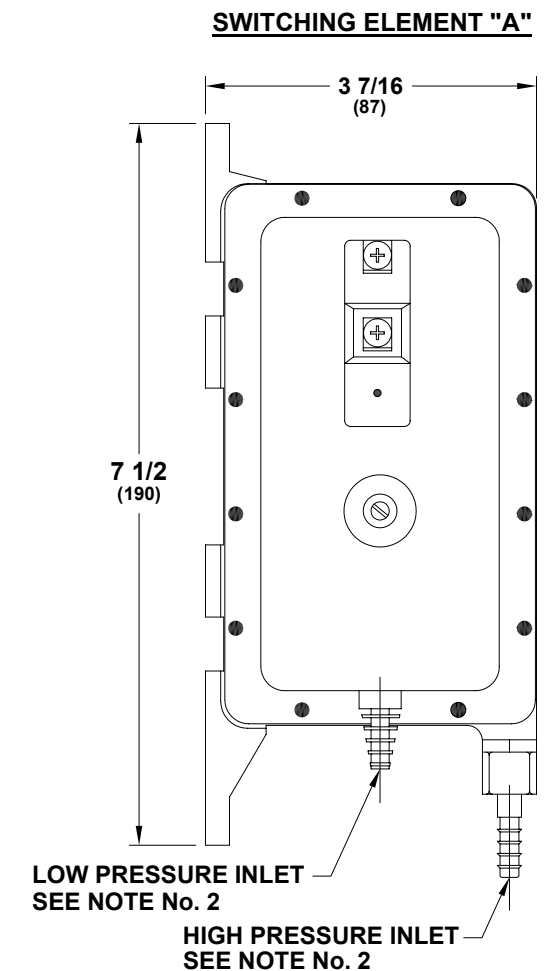
DIMENSIONS

INCHES
(METRIC)



SPECIFICATIONS: SWITCHING ELEMENT "A"

- 1.0 Mounting Position: Diaphragm Vertical (See Diagram Below).
- 2.0 Set Point (Sealed): Factory Set @ 0.20" w.c. Pressure Fall Vertical Plane.
- 2.1 Field Adjustable: "Operate Range" .07" w.c. to 2.0" w.c.
- 2.2 Field Adjustable: "Release Range" .04" w.c. to 1.9" w.c.
- 3.0 Approximate Switching Differential: Progressive; Increasing From .02 ± .01" w.c. at Minimum Set Point To Approximately .1" w.c. At Maximum Set Point.
- 4.0 Measured Media: Air
- 5.0 Operating Temperature Range: -40° to 176° F (-40.0° C to 80.0° C).
- 6.0 Life: 100,000 Cycles Minimum At ½ PSI Maximum Pressure Each Cycle And At Maximum Electrical Load.
- 7.0 Electrical Rating
- 7.1 300 Va Pilot Duty At 115 to 277 Vac
- 7.2 15a Non-inductive to 277 Vac
- 8.0 Contact Arrangement: SPST
- 9.0 Position Of Switch Contacts Before Pressure Is Applied: 



NOTES:

1. Adjustment Screw - Sealed
2. Sample Line Connectors, (1) High Pressure and (2) Low Pressure Will Accept 1/8" ID or 1/4" ID Flexible, Slip-on Tubing.
3. Approval or Recognition By: U.L. File MH6213; and C.S.A. File LR18754.

REF: FINAL ASSEMBLY No. 20741-214

SENSING SWITCH SPECIFICATIONS				
RAPID ENGINEERING				
CLEVELAND CONTROLS MODEL: DDP-106-214				
A	2792	2/25/03	RW	FL
REV	DCN No.	DATE	BY	CHKD
DRAWING RELEASE No. 2767				
DWN	DATE	CHKD	Cleveland Controls Division of UniControl Inc.	
RW	1/02/03	FL	1111 Brookpark Rd. Cleveland, Ohio 44109-5825	
CHKD	DATE	SCALE	USED ON	SHEET 1 OF 1
FL	1/07/03	NONE	B20712-214	REV A
			.XX = ±.015	.XXX = ±.005
			ANGLES = 90°	