

# Selectra®

## A200 Signal Conditioner

for direct or indirect fired gas applications

The track mounted A200 can convert a controller's DC output signal of either 4 to 20 milliamps or 0 to 10 volts, to a 0 to 20 volt DC signal. Toggling between 4-20 mA or 0-10 V is achieved with an on-board three position DIP (dual in-line package) switch: 4-20 mA - all positions on, 0-10 V - all positions off.

Selectra® electronic gas flame modulation is a superior alternative to methods such as motor driven butterfly valves. When computer or other process controls are specified instead of standard Maxitrol companion electronic controls, the signal conditioner provides compatibility with Maxitrol modulator / modulator-regulator valves.

Signal conditioners and M/MR valves can be configured for direct or indirect fired applications. They may be field installed on existing equipment or specified for new equipment installation.



**DIMENSIONS: 4.75" W x 3.38" H x 2.09" D**

Modulator and modulator-regulator valves are available up to 5 psi (350 mbar) inlet pressure, 30,000 CFH (850 m<sup>3</sup>/h) maximum, and pipe sizes from 3/8" to 4". (For additional valve information see Bulletin MT2035, or consult your Maxitrol sales representative)

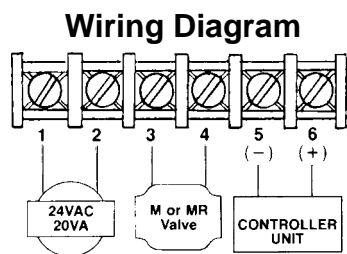
A200 output to valve: a low milliamp/voltage input corresponds to a low voltage output.

**SIGNAL CONDITIONER:**

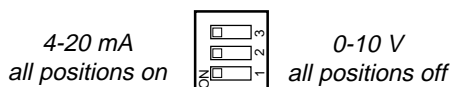
Ambient Limits.....-40° to 150°F (-40° to 66°C)

**SIGNAL CONDITIONER POWER REQUIREMENTS:**

24V AC transformer, 20 VA capacity (50/60 Hz).



**Three Position DIP Switch**



**IMPORTANT**  
**READ PRIOR TO INSTALLATION**

TO AVOID INTERNAL DAMAGE TO THE A200 SIGNAL CONDITIONER FOLLOW THESE GUIDELINES:

1. Transformer secondary must not be grounded in any portion of the circuit external to the A200 signal conditioner. If existing transformer is grounded, a separate isolated transformer must be used.
2. Multiple A200 signal conditioners controlled by a signal source with common outputs (terminals 5 & 6) require separate transformers for each A200 signal conditioner.
3. Multiple A200 signal conditioners powered by a single transformer require isolated signal inputs (terminals 5 & 6) to each A200 signal conditioner.

A copyrighted publication of



www.maxitrol.com

Maxitrol Company  
23555 Telegraph Rd., P.O. Box 2230  
Southfield, MI 48037-2230 U.S.A.  
248.356.1400 • Fax 248.356.0829



European Representatives  
Industriestrasse 1 48308 Senden, Germany  
49.2597.9632.0 • Fax 49.2597.9632.99  
Warnstedter Strasse 3 06502 Thale, Germany  
49.3947.400.0 • Fax 49.3947.400.200

