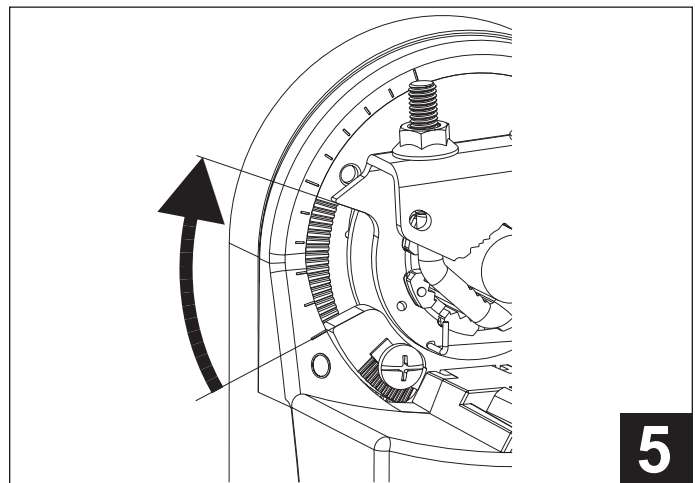
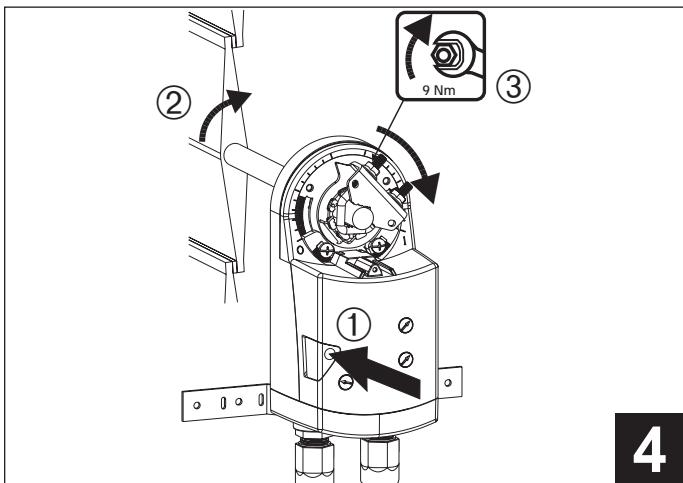
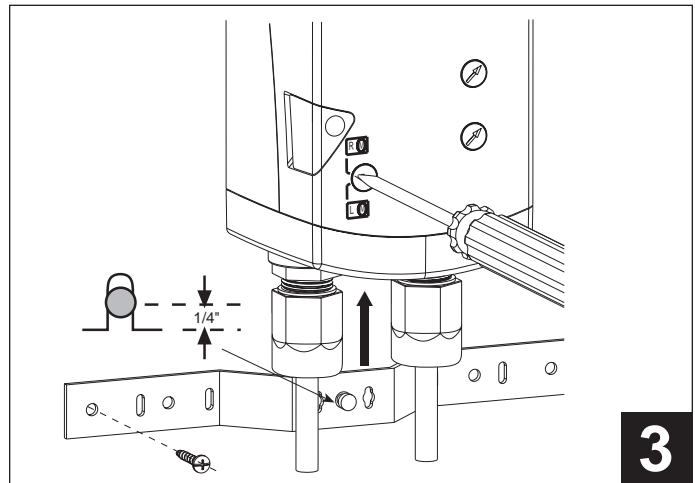
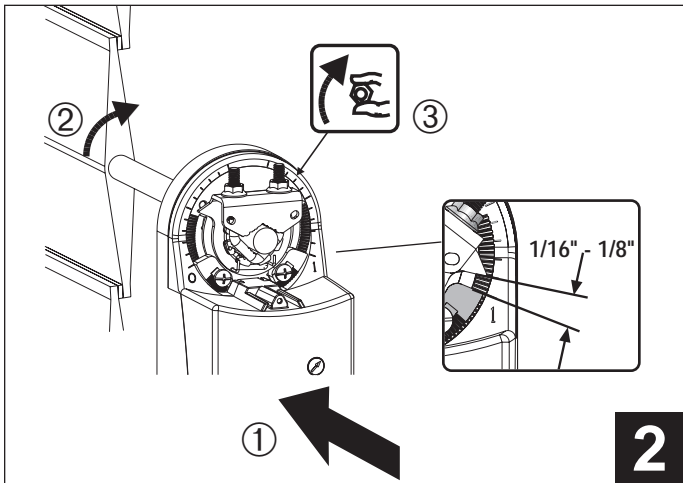
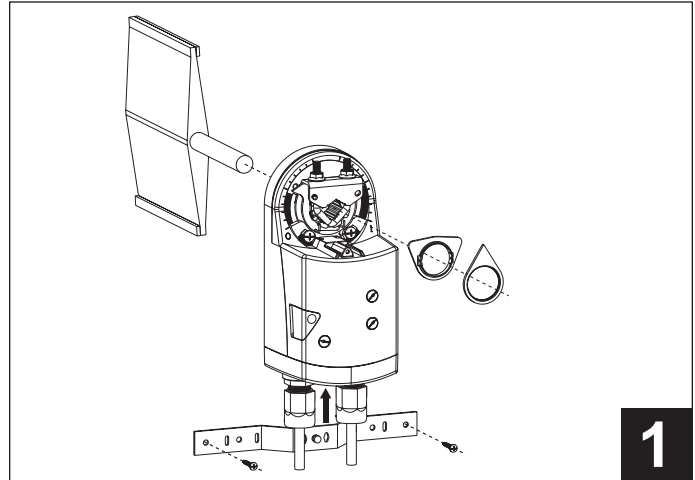
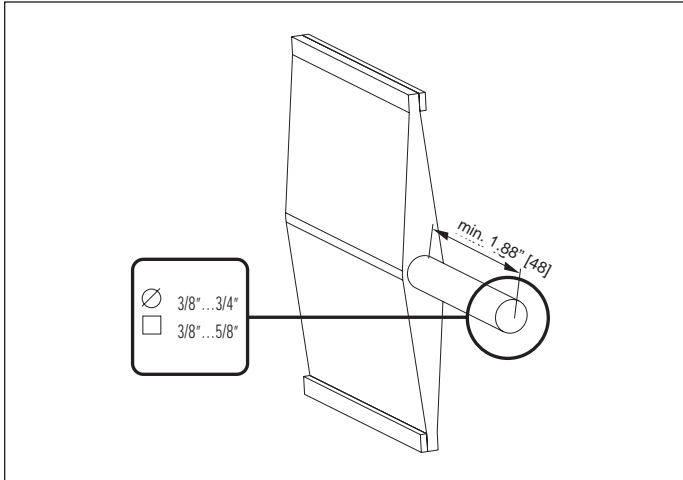


## Quick-Mount Visual Instructions



1. Turn damper blade to its fully closed position.
2. With manual override button depressed, rotate actuator clamp to about 1/16" - 1/8" between actuator stop and clamp, depending on damper seal design. Slide actuator over shaft and finger-tighten nuts.
3. Using a screwdriver, Select clockwise or counterclockwise rotation. (Example shown is for clockwise closing damper). Slide anti-rotation bracket up under actuator engaging cen-

ter cut-out on actuator back. Secure bracket with self-tapping screws.

4. Tighten the two nuts on the universal clamp with 10 mm wrench, 6-8 ft-lb torque. (On dampers with edge seals, actuator will compress damper blades when reaching end position for air-tight damper.)
5. Adjust end stops, if required.