



HVAC Direct-Fired 2000 Series Overview

- Improved indoor air quality - Helps dilute airborne contaminants making exhaust systems operate more efficiently
- Augment existing ventilation system - Unit can be designed to automatically modulate outdoor air volume from 20% to 100% to help meet ventilation requirements in cold weather and decrease heat buildup in warm weather
- More consistent temperatures and less stratification - Optional cooling effectively reduces indoor air temperatures to help keep people and processes productive
- Coast savings - Heating systems deliver 100% of the heat generated into the building resulting in energy savings
- Flexibility and convenience - Heating systems require little to no ductwork and can be installed indoors or outdoors
- Evaporative and mechanical cooling packages available
- Ease of management and control - Optional computer-based intelligent controls provide system information easily and effectively

Reliable, Efficient System Operation Provided by:

- 30:1 fully modulating burner that maintains 100% combustion efficiency
- Double-width, double-inlet, forward-curved centrifugal fan built for long life
- Energy-saving ignition system
- System that puts 100% of the available heat in the airstream, not out a flue
- Unit that uses up to 50% less energy
- Remote Control Panel for easy operation and remote temperature adjustment
- Electronic fuel modulation providing immediate response
- UV scanner for excellent reliability and durability on Models 2010 - 2050
- Temperature dial for quick, easy adjustment
- Operation of fan only in warm weather to enjoy free ventilation cooling
- Compliance to ETL per ANSI Z83.18 or Z83.4 standards
- Industry-leading 80-point checklist to help facilitate trouble-free startup

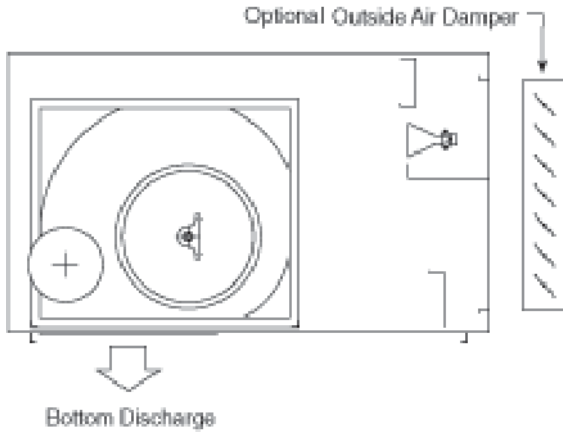
2000-Series Intelligent Controls Features:

- Module can monitor, diagnose, log and report on more than 30 functions including temperature, humidity and building pressure
- Windows™-based displays simplify set up and changes
- Hourly collection of air handler data allows trending and in-depth analysis
- Compatible via modem or internet with Bacnet®, ModBus®, N2Bus®, Lonworks®, etc. systems



2000 Model Configurations

Make-up Air (MUA) Models

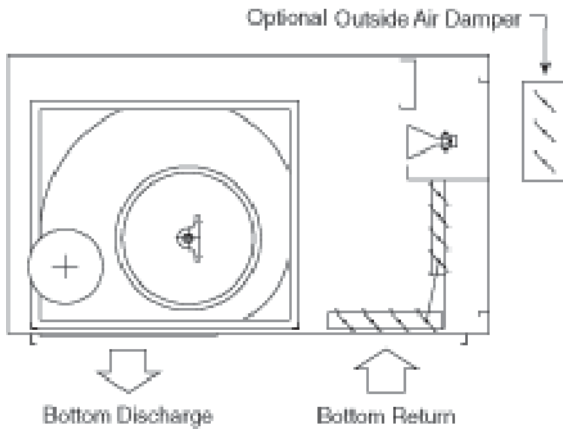


Design: 100% replacement air with a fixed discharge air volume

Function: Supplies direct replacement air for building mechanical exhaust

Application: Used as make-up air for industrial processes which incorporate mechanical exhaust

Air Management (AM) Models (Not available on Model 2005)

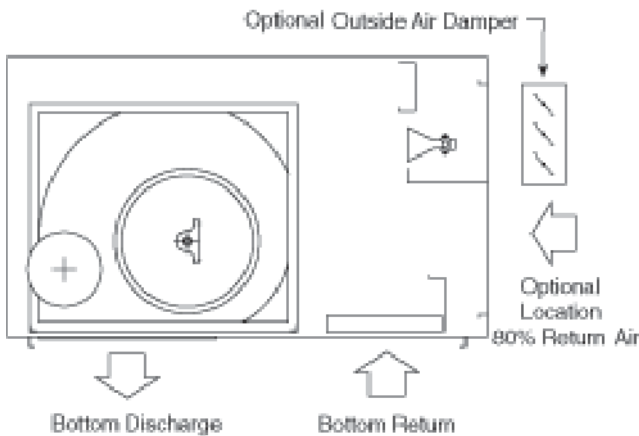


Design: Variable outdoor air from 20% to 100% and a modulating burner with a 30:1 turndown ratio. Discharge air volume is fixed.

Function: Automatically responds to building pressure and temperature needs.

Application: Used in industrial and commercial buildings that have air quality and specific air management requirements

Fixed Recirculation (FR) Models (Not available on Model 2005)



Design: Fixed 80% air turnover rate and 20% outdoor air replacement rate. Discharge air volume is fixed.

Functions: Provides efficient, low-cost heating where minimum ventilation rates are required

Application: Used in warehouses, distribution centers, retail outlets, etc.



Other 2000-Series Options:

- 10" or 20" Roof Curb simplifies rooftop mounting
- Inlet Hood protects against water entrainment
- Filter Section with polylink or aluminum filters for longer equipment life of internal components
- Motorized Inlet Damper for exfiltration control
- FM/IRI approved gas trains
- Upright heater stand or legs of varying heights

2000-Series Conventional Controls' Options:

- Low-temperature automatic shutdown
- Space temperature control for added comfort
- 7-day time clock
- Remote Control Panel with burner and blower switches for easy operation
- Mild weather stat

Long Lasting Construction Provided by:

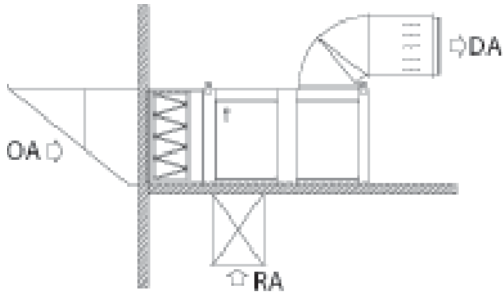
- Heavy-duty, corrosion-resistant, galvanized steel construction
- Sturdy, integral frame that is screwed and bolted together for durability and longer service life
- Unpainted galvanized or white finishes available
- Heavy-duty, factory-installed motor and drive package designed for long-lasting performance
- Heavy-duty, pre-lubricated bearings provide up to 30,000 hours of ABMA L-10 performance

Ease of Maintenance Provided by:

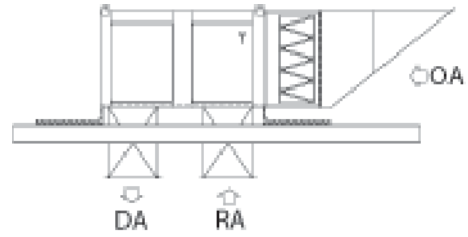
- Large access panel for easy maintenance of blower, motor, drives and burner
- Blower installed downstream of burner for convenient access



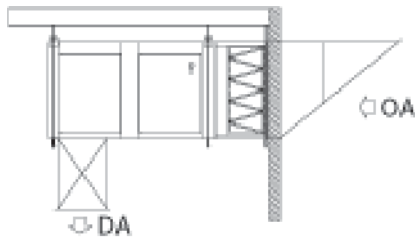
Mezzanine-Supported



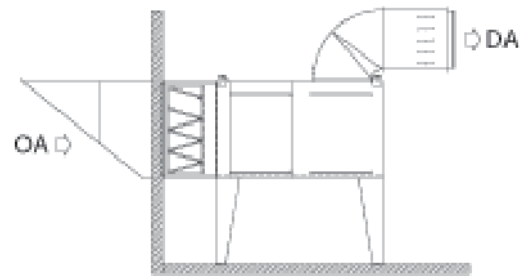
Roof-Mounted



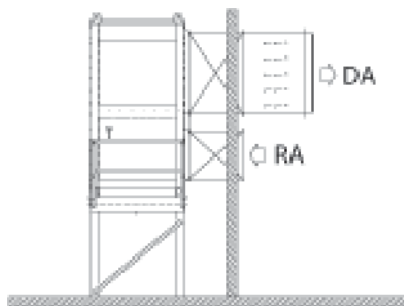
Suspended (Wall or Roof Inlet)



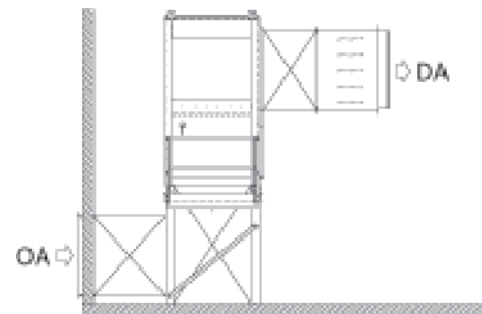
Horizontal on Legs (Indoor or Outdoor)



Upright Outdoor



Upright Indoor



LEGEND

OA = Outside Air

DA = Discharge Air

RA = Return Air